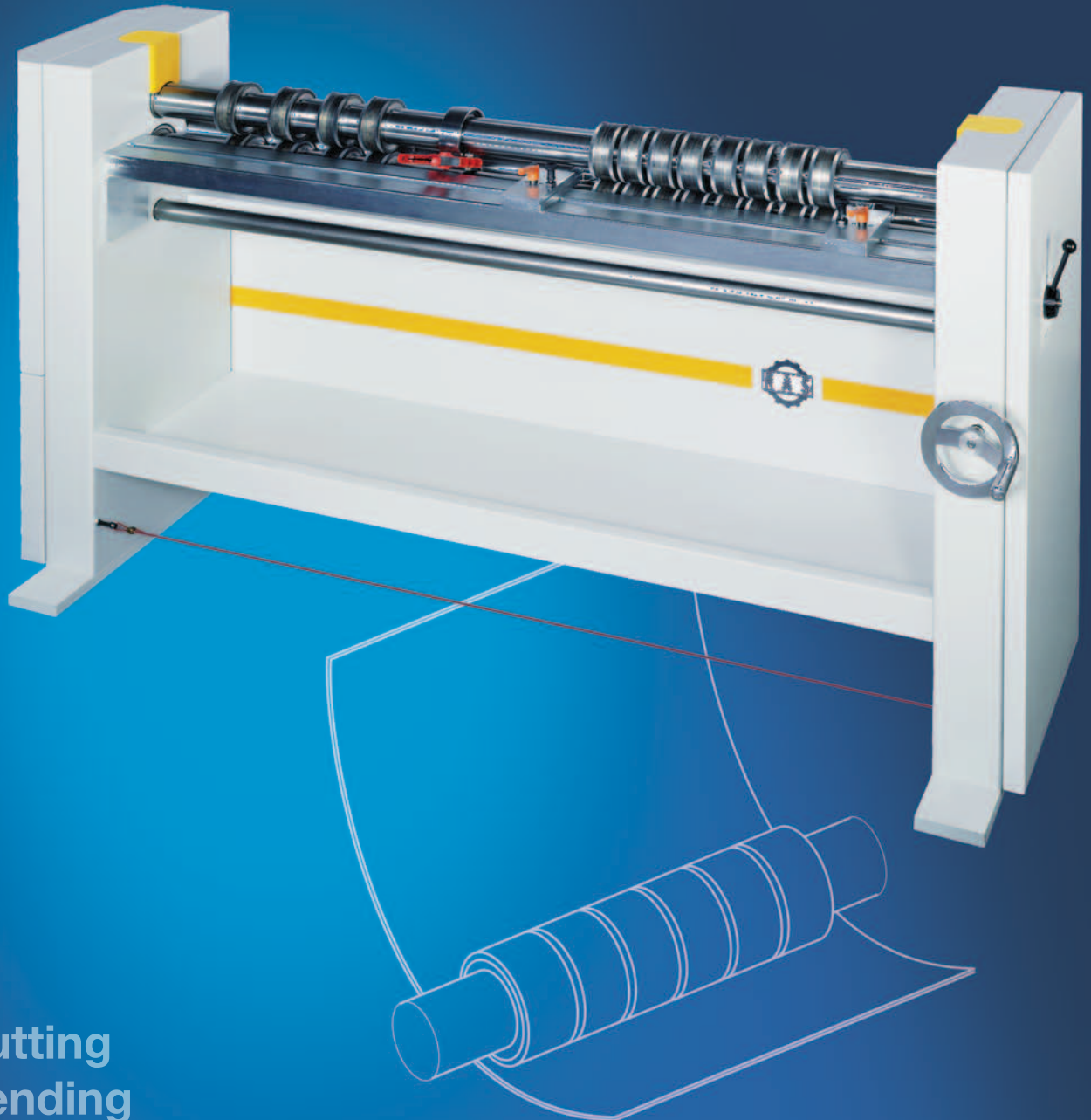


## VENTIrounder



- **Cutting**
- **Bending**
- **Forming**

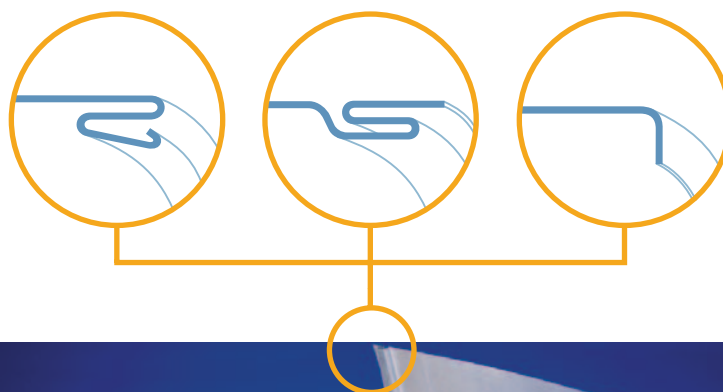
## VENTIrounder

### Perfect rounding of elbow duct cheeks!

The RAS VENTIrounder easily and quickly rounds inside or outside elbow duct cheeks. Special challenge: The blanks come to the machine with rollformed profiles. Normal round machines would flatten the seams when processing. Not so the RAS VENTIrounder!

On the RAS VENTIrounder you just move the rolls along the working length of the machine and adjust them to the rough size of the blank. The knurled rolls provide a good transport grip and the rolls support the blank during the rounding process. This results in rounded elbow cheeks with Snap Lock or Pittsburgh seams still open after rounding. Also available are rolls for the standing seam. The machine is also available in a configuration for the rounding of stainless steel blanks. No matter what configuration you choose, the result is perfectly rounded duct cheeks!

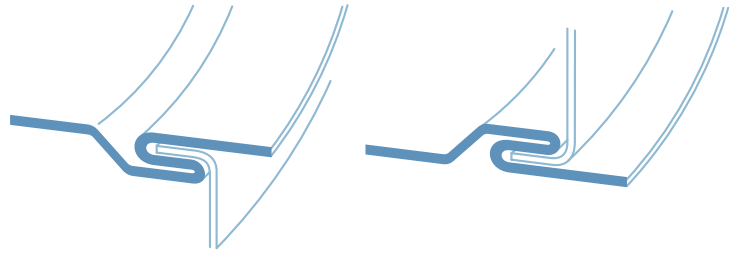
A gear motor with variable speed sensitively drives the upper and lower shaft. Forward or backward rotation can be easily set with a footswitch. The shafts are housed in roller bearings in the sturdy and bulky machine frame.



#### Standard:

- 12 hardened rolls on each shaft
- Hand wheel for a sensitive adjustment of the rear shaft
- Stiffening pliers
- Footswitch for variable speed
- Footswitch for forward or backward rotation

## VENTIrounder



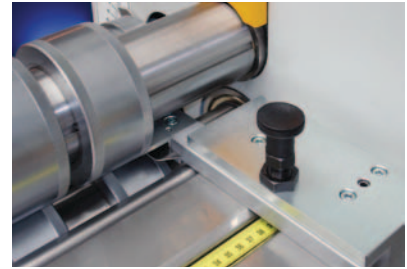
Example: Inside and outside elbow cheeks with Pittsburgh seam



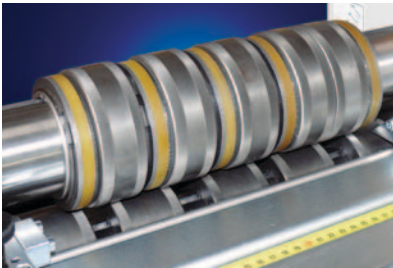
The position indicator allows for repeatable radius adjustments



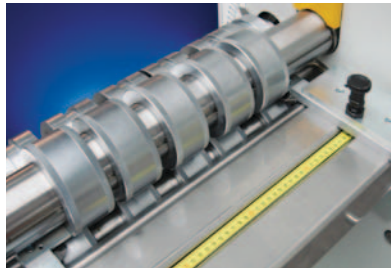
Stiffening pliers for consistent radii



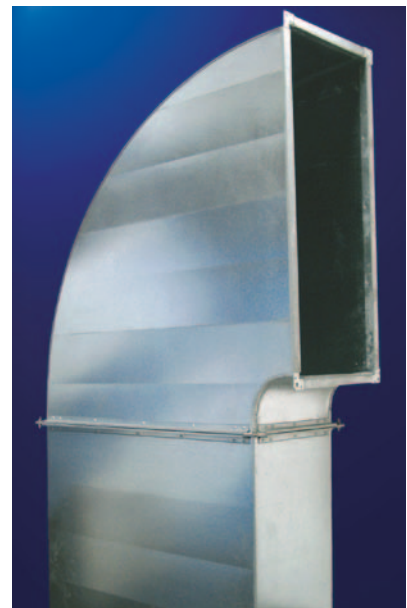
The integrated tape measure for quick roll setting



Rolls for rounding blanks with a Standing seam



Machine for stainless steel applications with hard chromed rolls and stainless supports



Air duct with elbow cheeks rounded on the RAS VENTIrounder

### Optional:

Rolls for Snap Lock seam and Pittsburgh seam

Rolls for Snap Lock seam, Pittsburgh seam and Standing seam

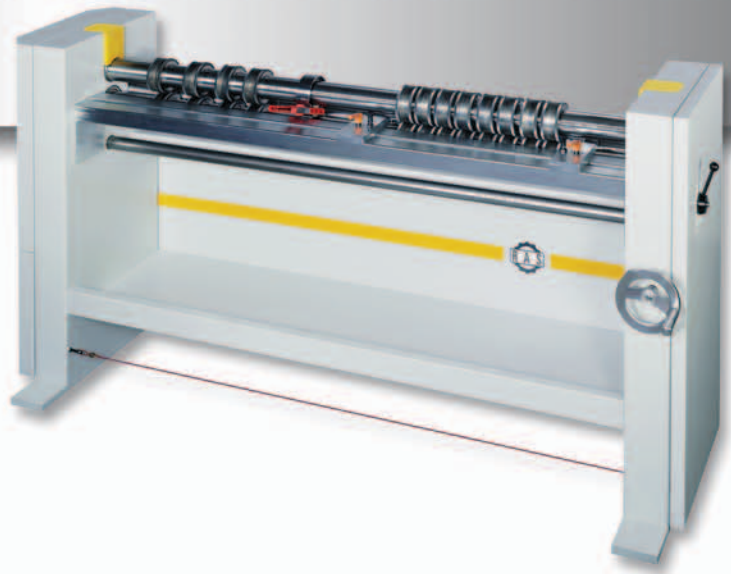
Machine for stainless steel Snap Lock seam and Pittsburgh seam

Table configuration for Snap Lock seam and Pittsburgh seam

Table configuration for Snap Lock seam, Pittsburgh seam and Standing seam



# VENTIrounder



## Rounding Machine

Technical Data	VENTIrounder	
Material thickness max (at 400 N/mm <sup>2</sup> , 58,000 PSI)	1.25 mm	18 Ga
Blank width min	120 mm	4.7"
Blank width max	1500 mm	59.0"
Radius min about	150 – 200 mm	5.91" – 7.87"
Standing seam flange height max	13 mm	0.51"
Speed	0 – 10 m/min	0 – 32.8 ft/min
Drive power	1.5 kW	2.1 hp
Machine width	2200 mm	86"
Machine depths	650 mm	26"
Machine height	1050 mm	39"
Working height	870 mm	34.2"
Voltage	230 V, 1 cycle	230 V, 1 cycle
Weight net	480 kg	1060 lbs

RAS Reinhardt Maschinenbau GmbH  
 Richard-Wagner-Str. 4-10  
 71065 Sindelfingen · Germany  
 Tel. +49-7031-863-0  
 Fax +49-7031-863-185

[www.RAS-online.de](http://www.RAS-online.de)  
[Info@RAS-online.de](mailto:Info@RAS-online.de)

Modifications reserved.  
 Pictures may show options.